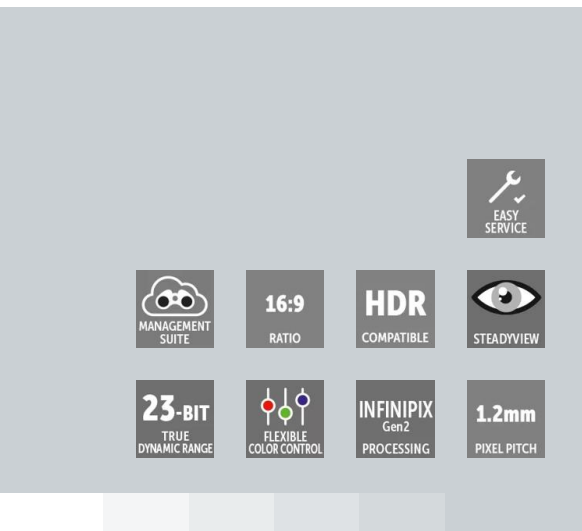


NT1.2

1.2 mm pixel pitch, high-res indoor LED display



- **1.2 mm pixel pitch LED solution**
- **Superb color accuracy**
- **Thin tiles for easier integration, maintenance, and better aesthetics**
- **Smooth and efficient operations**
- **Up to 5 years of dedicated service and support**

Running high-impact video walls has never been this easy. The LED NT series offers sharper images through Infinipix® Gen2 processing power, a thin tile that is therefore lighter, simplified mounting for easier maintenance, smarter connections for enhanced quality and operation, and good low-light performance.

Superb image quality

With no visual distortion, low latency and perfect syncing, applications from boardrooms and lobbies to control rooms and broadcast can now enjoy high-quality viewing for all types of content. This also requires perfect color accuracy at every level of brightness, which is maintained by Infinipix® Gen2. The embedded proprietary Smart Calibration™ also ensures wide color gamut support for rich and true-to-life images.

Easy maintenance and serviceability

The thin tiles contribute to the product's versatility and ease of installation. This lowers the wall's footprint and broadens the possibilities for set-ups at different locations, enabling better integration into existing spaces. The accessibility from both front and back drastically improves the ease of maintenance. What's more, Barco's Video Wall Manager software automatically configures the different tiles, which greatly speeds up the installation process.

Proactive troubleshooting

The cloud-based Video wall Management Suite continuously monitors all vital parameters of your LED video walls. It ensures smooth maintenance and stress-free serviceability through multiple monitoring and diagnostic capabilities. The result is faster and more effective troubleshooting as possible problems are solved quickly and downtime can be prevented. Using Video wall Management Suite, all the walls of a facility can be operated as a network.

Product specifications**NT1.2**

General specifications	
Pixel pitch	1.25 mm
Pixels per tile	480 x 270 (HxV)
Aspect ratio	16:9
Brightness	>600 nit
LED lifetime	100,000h (video -50% brightness)
Refresh rate	3,840Hz
Internal processing	23 bit
Color depth	16 bit (281 trillion colors)
Control	Infinipix Gen2
Hor. viewing angle	160° +/-5°
Vert. viewing angle	160° +/-5°
Brightness uniformity	>98%
Ergonomics	SteadyView driver algorithm to reduce eye fatigue
Contrast	>5,000:1
Power consumption	642 W/m ² (max.) 214 W/m ² (avg.)
Heat dissipation	2,189 BTU/hr/m ² (max.) 730 BTU/hr/m ² (avg.)
Operation power voltage	100-240V 50/60Hz
Operational temperature	-10°C to +40°C / 14°F to 104°F
Operational humidity	10-80%
IP rating	IP30
3D	No
HDR	HLG / HDR10 supported
Redundant power supply	Optional
Shaders	No
Concave curvature	Up to 5° inter tile for standard and camera curved frame (7m radius)
Dimensions	600 x 337.5 x 39mm (WxHxD) / 23.62 x 13.29 x 1.54 inch (WxHxD)
Weight / Tile	6 kg / 13.2 lbs
Serviceability	Front and back access
Cables	No external cabling
Certifications	CE, UL, FCC class A, CB, RoHS, WEEE, REACH
Warranty	Extended warranty up to 5 years
*Note	Preliminary spec info

Last updated: 20 Nov 2023

© 2018 Barco nv. All rights reserved. Reproduction in whole or in part without written permission is prohibited. All brand names and product names are trademarks, registered trademarks or tradenames of their respective holders. Due to continued innovation, information and technical specifications are subject to change without prior notice. Please check www.barco.com for the latest specifications.

Secure cloud-based platform for enhanced Large Video wall management

Video wall Management Suite - anywhere, anytime

Full flexibility

A secure platform for worry-free video wall management

BARCO

- **Manage the complete installed base from a central location**
- **Offer lower and predictable operational costs**
- **Ensure faster and more effective troubleshooting**
- **Increase customer satisfaction**
- **Drive productivity**

Barco Video wall Management Suite in practice



Keep an eye
on your video walls

Real time monitoring,
and get notified

MONITOR



Monitor

Do you want to get rid of time-consuming and error-prone manual administration of your video walls fleet? The Video wall Management Suite 'Monitor' package with its live dashboard gives you an overview of the installed base and provides you with a quick snapshot of the critical operational parameters (brightness, temperature, settings ...). Additionally, you can take custom notes to track maintenance history.

DIAGNOSE



Diagnose

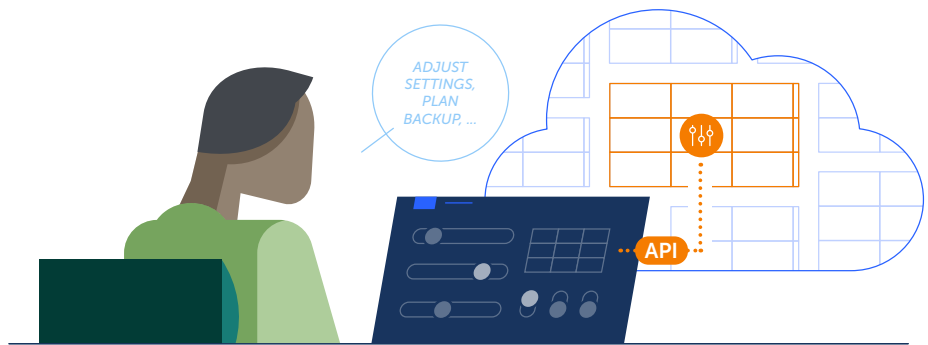
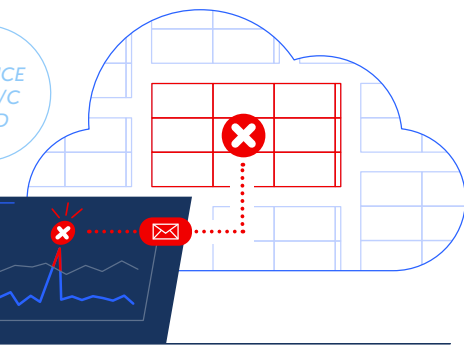
Stop losing precious time with endless back-and-forth communication to diagnose the most straightforward issues. Next to all the features available in the Monitor package, the Diagnose option provides additional tools to remotely determine the nature of an issue. View all current issues and a prediction of potential health issues in the dashboard, with ideas on how to resolve them. You can even get notified by e-mail when an error or warning pop up, for immediate attention.



faster diagnosis

Video wall control
at your fingertips

CONTROL



Control

Do you like to remotely control the operation of the video wall and need to integrate the Video wall Management Suite data into your own dashboards? The 'Control' package allows you to remotely control (On/off, FW upgrades ...) directly from the Cloud dashboard and provides cloud data through an API for integration into your own software packages.

More features are being added to the Control package. Striving to always excite you! Stay tuned ...

Video wall Management Suite offerings and packages

Video wall Management Suite is offered as a yearly subscription or as part of a Barco Service Package. The Monitor offering is a Freemium offer for our customers with video walls under warranty/service contracts. You can extend and upgrade your subscription whenever you want to benefit from the extra functionalities.

	Monitor	Diagnose	Control
Central view of all connected video walls	✓	✓	✓
View and compare all critical parameters across displays	✓	✓	✓
Take custom Notes	✓	✓	✓
Role-based Access Control	✓	✓	✓
View Warranty or Maintenance contract status	✓	✓	✓
History overview of all critical parameters of displays		Unlimited history	Unlimited history
View wall brightness variations over a period		Unlimited history	Unlimited history
View current Health Issues (Errors/Warnings)		✓	✓
Predict potential health issues (Rule based analytics)		✓	✓
Trigger and download a diagnostics package		✓	✓
Easy log file viewer		✓	✓
Wall configuration back-up in the cloud		✓	✓
Receive Health notifications by email		✓	✓
View Health Issue history		✓	✓
User configurable rules for notifications through email		✓	✓
Remote control, configuration & mgmt. of video wall			✓
Access Video wall Management Suite data through API			✓
Additional features – coming soon!			✓

© 2020 Barco NV. All rights reserved. Reproduction in whole or in part without written permission is prohibited.
All brand names and product names are trademarks, registered trademarks or tradenames of their respective holders.
Due to continued innovation, information and technical specifications are subject to change without prior notice.
Please check www.barco.com for the latest specifications.

M00967-R00-0321-PB March 2021

Barco nv | www.barco.com
Beneluxpark 21 | 8500 Kortrijk | Belgium
T +32 56 36 89 70 | F +32 56 36 83 86

ENABLING BRIGHT OUTCOMES

BARCO

Infinipix® INP-100

Infinipix® Gen2 processor for LED displays



- **Manages one or more connected display(s)**
- **Fine-tunes brightness without any loss of image quality**
- **Allows for brand-specific color calibration**
- **Smooth and seamless results for still and moving content**

The Infinipix® INP-100 is the second generation of Barco's proprietary LED display processors. The INP-100 processes signals coming from connected video sources and transmits them to the Infinipix transceiver cards integrated into the LED tiles.

Delivering flawless viewing experiences

Whatever your needs are, the Infinipix® Gen2 platform helps you get the most out of your LED content.

Whether your application requires a dimmed LED wall or a display run at high-brightness, you can keep the same color accuracy, grey scale levels and details thanks to the Infinipix® Gen2 processing. Don't let your creativity be limited by your canvas, and always show your content as intended.

With lowest latency for showcasing motion content, black frame insertion to optically reduce motion blur and premium anti-aliasing filters to realize perfectly scaled and sharp images, Barco's Infinipix® Gen2 is optimized to bring state-of-the-art results and exceptional viewing experiences for still, slow-moving and fast-moving content.

Unmatched reliability

In the unlikely event that the data path is interrupted, all subsequent tiles in the chain would be void of content. Infinipix® Gen2 offers a unique 4-way failover system for the premium TruePix range of LED video walls. This means that there is a data connection to all surrounding tiles, which can take over whenever necessary. Set-up is really easy, as the tiles are automatically recognized and the data path is automatically configured.

Download the Infinipix Gen2 leaflet for more information! Check our Video wall Manager software for more information about how to set-up and configure your displays.

Product specifications

INFINIPIX® INP-100

General specifications

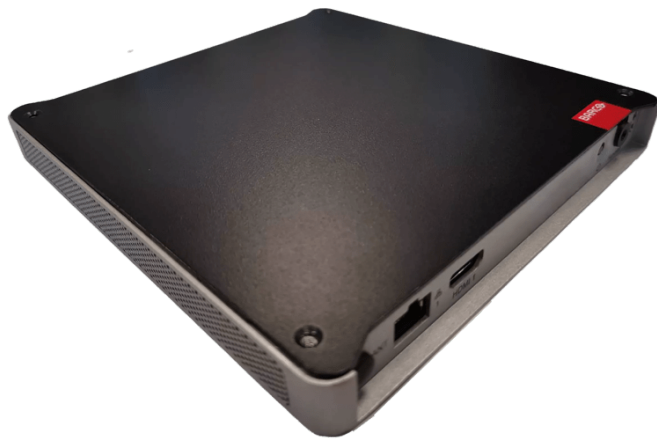
3D sync	Implemented on BNC connector
Wall control	1x GbE RJ-45 connector used as link to a separate Video wall Manager Edge for centralized management
Video outputs	8x SFP Modular Wall Outputs: <ul style="list-style-type: none">• SFP+ cages only supporting the Barco included Finisar SFP modules• Using multi mode fiber of minimum type OM3 within the OM specified length
Video inputs	1x HDMI™ 2.0 (type A) and 1x DP1.4 Resolution: HDMI™ 2.0 (Type A): <ul style="list-style-type: none">• Up to 4096x2160@60Hz at 4:4:4 at 8 bpc (24 bit/px)• Up to 4096x2160@60Hz at 4:2:2 at 12 bpc (36 bit/px) Displayport 1.4: <ul style="list-style-type: none">• Up to 7680x4320@30, YCbCr 4:2:2 at 12bpc (36 bit/px)• Up to 3840x2160@60Hz RGB, or YCbCr 4:4:4 at 12 bpc (36 bit/px)• Up to 3840x2160@120Hz, YCbCr 4:2:2 at 12bpc (36 bit/px) with custom timings Input capabilities: <ul style="list-style-type: none">• HDMI™ clock limited to 600 Mhz• Progressive RGB and YCbCr 4:2:2 and 4:4:4• Supports input bit depth of up to 12 bpc• Refresh frequencies: 23.98 Hz, 24 Hz, 25 Hz, 29.97 Hz, 30 Hz, 47.95 Hz, 48 Hz, 50 Hz, 59.94 Hz, 60 Hz, 100 Hz, 119.88 Hz, 120 Hz, 144 Hz, 240 Hz (Please consult your LED panel specification for its supported frequencies which may be different than what is supported by the processor)• HDCP 1.4, HDCP 2.2, HDCP 2.3• Not supported: CEC
Altitude low pressure	Max. 2000 m (6562 ft.)
Regulation Compliance	CE, cSGS, SGSus, EAC, BIS, PSE, KC, BSMI, RCM
Environmental temperature	Operational: 0-40° Celsius (32-104° F) Non-operational: -20°C (-4°F) to 60°C (140°F)
Environmental humidity	Operational: 10-85% @ 40° (104° F) non-condensing Non-operational: 10% to 95% @ 40°C (104°F)
Dimensions (HxWxD)	177 x 222.2 x 43.5 mm (7 x 8.75 x 1.7 in)
Weight	2.7 Kg (5.95lbs)
Power consumption	40 Watt
Power supply	100-240VAC, 1.5A-0.8A -50/60Hz
Warranty	3 years standard warranty

Last updated: 10 Jul 2024

© 2024 Barco nv. All rights reserved. Reproduction in whole or in part without written permission is prohibited. All brand names and product names are trademarks, registered trademarks or tradenames of their respective holders. Due to continued innovation, information and technical specifications are subject to change without prior notice. Please check www.barco.com for the latest specifications.

WME-050

Next-generation large video wall management, made easier



- On premise installation
- Single access to Barco's Video wall Management Suite
- Secure and easy integration in existing IT networks
- Reliable enterprise platform, designed for 24/7 operation

The WME-050 helps you to easily set up, configure and maintain your video wall. It also enables a secure gateway to the Video wall Management Suite, which offers the possibility to manage a fleet of video walls from a centralized, remote location. This allows integrators and managed service providers to monitor all critical parameters of the video walls in a single dashboard. In this way, they can maximize the uptime of their customers, schedule maintenance before a failure occurs, ...

Maintaining, managing and monitoring remotely

The challenge to easily maintain, manage and monitor devices, often distributed over a number of different buildings and locations is perfectly addressed by our Video wall Management Suite.

Be in control, everywhere, from anywhere

With Barco's Video wall Management Suite, service providers are always in full control of all video walls in their fleet. There are a number of subscription models available, used to Monitor or Diagnose the video walls. Depending on your subscription model, you have different features available.

Product specifications**WME-050**

General specifications	
Operating system	Linux
Hardware configurations	Intel(R) Celeron 6305E CPU (Tiger Lake) 8 GB RAM 60 GB Industrial SSD
Connectivity	2x LAN 2x USB 3.0 (Type A) 2x USB 2.0 (Type A)
Power	DC: 19V, 3.42A
Power consumption	65W (max)
Heat dissipation	221 BTU/h
Noise level (@ 20°C -68°F)	Fanless design
Operating conditions	0°C -40°C, up to 80% humidity, non-condensing
Package content	<ul style="list-style-type: none">■ 1x WME-050 controller■ 2x Chassis mounting brackets■ 4x Chassis feet■ 4x Screws (M3x8)■ 1x Infrared (IR) receiver■ 1x Remote control■ 1x External power supply■ 1x Country-specific power cable (optional)■ 1x Quick Start Guide■ 1x Safety Manual
Accessories	19" rack mount (R985099) (optional)
Dimensions	
Dimensions (HxWxD)	19 x 180 x 190 mm
Dimensions (packaged)	90 x 310 x 230 mm
Weight	Appliance: 0.87 kg Power supply: 0.21 kg
Packaged weight	1.7 kg

Last updated: 20 Nov 2023

© 2018 Barco nv. All rights reserved. Reproduction in whole or in part without written permission is prohibited. All brand names and product names are trademarks, registered trademarks or tradenames of their respective holders. Due to continued innovation, information and technical specifications are subject to change without prior notice. Please check www.barco.com for the latest specifications.